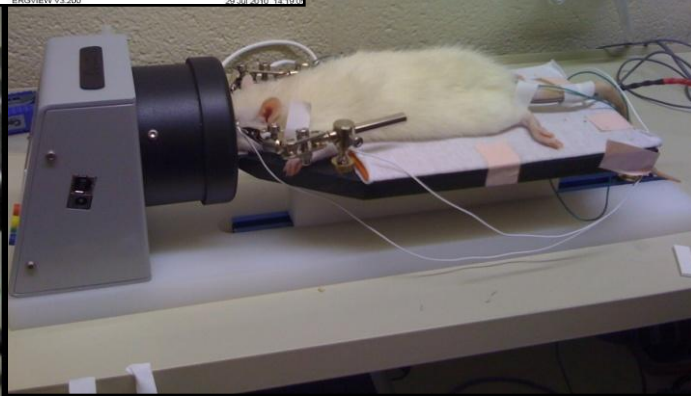
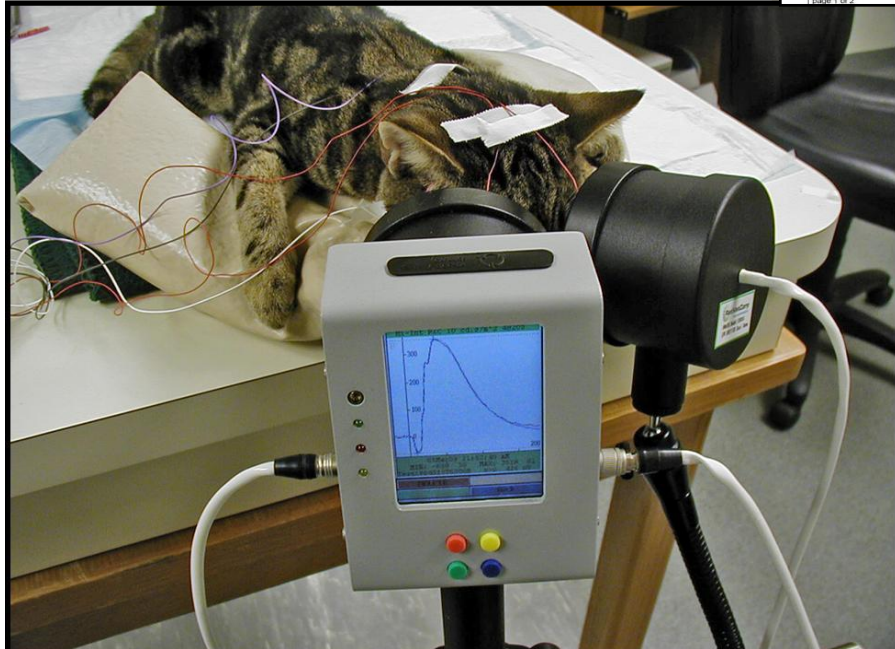
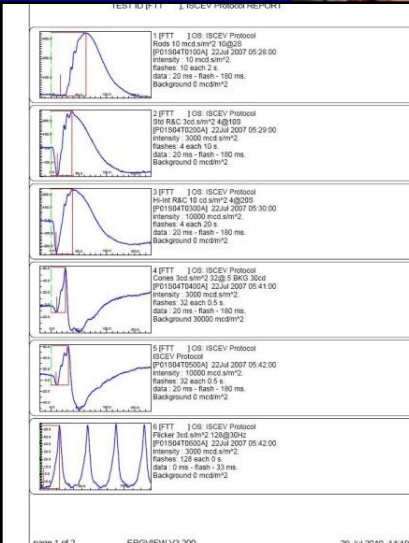
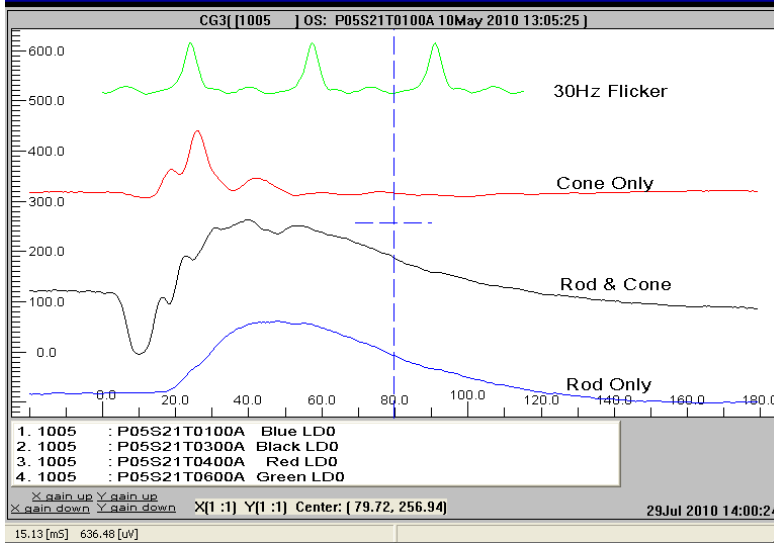


# Handheld Multi-species ElectroRetinoGraph (HM sERG)

- ❖ All in One Full Field Flash ERG:
  - Easy to Use Four Button Operation
  - Single or Dual Mini-Ganzfeld Stimulator
  - Built-in Filters and Amplifiers
  - On-Board Micro-computer / LCD Display
  - Removable Compact Flash Memory
- ❖ Battery operated for safety and portability
- ❖ Meets ISCEV (2008) Guidance for Flash ERG and VEP
- ❖ Flexible Protocol and Test Configurations
- ❖ Powerful ERGView Analytical Software



**For More Information Contact:**  
**Ocuscience**  
 8609 Jarboe St. • Kansas City, Missouri 64114  
[info@ocuscience.us](mailto:info@ocuscience.us)  
 (816) 529-5712



## HMsERG Model 2000 Full Field Flash Electroretinograph Specifications

Patient safety:	No connections to the mains during operation.
Keyboard:	4 Keys provide simple operation and program control.
Protocol Test Sessions	<b>Automatic</b> Protocol (ISCEV, Dog Diagnostic, Scotopic/Photopic Series, and QuickRetCheck) controls the flash intensity, flash frequency, number of flashes to be averaged, the background illumination, and, if required, the dark and/or light adaptation time for each step. <b>Manual</b> Tests include 8 standard tests plus a user customized single test. Custom protocols available with ERGTran Editor.
Flash Stimulation	Protocol dependent from 10 mcd.s/m <sup>2</sup> to 30 cd.s/m <sup>2</sup> and duration from 0.005 to 5 msec. Intensity may be user customized for Manual tests.
Response averaging:	Set by the Automatic Protocols. Manual tests may be set from 2 to 256.
Record Sampling time:	200 msec. for Automatic Protocols. User may also choose up to 1.0 sec.
Analog Input:	2 analog channels with Gain 3,000, Input Imp. > 10 <sup>7</sup> ohm, Noise <2μV p-p (0.3-300Hz), Band pass 0.3 to 300Hz, and CMRR >110dB. Software automatically sets display range from 40 to 1,500μV full scale.
Electrode Measurements:	Electrode Impedance and Baseline may be tested before making ERG measurement allowing user to correct for poor electrode contact or placement.
Memory System:	Operating program included on Compact Flash (CF) card - allows for easy software updates. CF used to save data from more than 1000 tests. User may use file menu to preview data from all current and previous tests.
Processing Test Data:	Data on CF Card (or connection of unit through USB port) can be installed onto user's PC allowing ERG response, Comparison, Oscillatory Potential, and FFT analysis and printing.
Battery:	Powered by 3.6 volt, 9 Ah rechargeable Lithium-Ion battery pack provides greater than 10 hours of continuous operation. Medical grade (class I & II) AC adapter included.
Display:	75x53 mm, color TFT Display with room light controlled backlight.
Stimulator:	Ganzfeld type <b>76 mm</b> diameter Flash Dome with <b>55 mm</b> aperture. This provides uniform illumination of the eye as required by ISCEV-2008 with intensity from 10 mcd.s/m <sup>2</sup> to more than 30 cd.s/m <sup>2</sup> . Dual photo-stimulator optional
Weight:	Less than 1.5 pounds.
Handheld:	Handle with 1/4"-20 tripod adapter may be removed for mounting onto table stand.